

I have never seen the
Mona Lisa.

But I have seen countless
reproductions in various
books, slides, and, more
recently, digital images
on computer screens.

[
printed here:
image_64477_v2_
m56577569830685176.jpg

found on the Louvre
website at http://www.louvre.fr/media/repository/resources/sources/illustration/atlas/image_64477_v2_m56577569830685176.jpg

600x457 pixels
129,426 bytes

]

Binary Art



Leonardo da Vinci

Portrait of Lisa Gherardini, wife of Francesco del Giocondo

Oil on Pine Board

30" x 20 ⁷/₈"

1503 - 1506

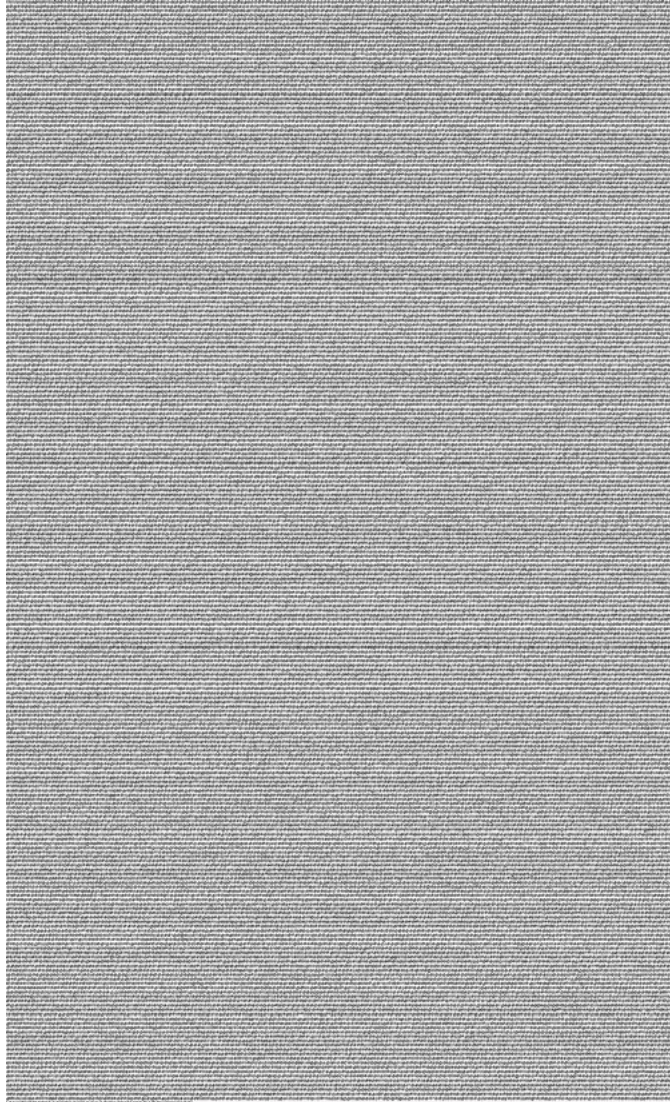
Raw binary presented as art

Binary Art is a series of works in which the raw data contained in a digital file representing a well known masterpiece is presented as a work of art, in and of itself.

The original file's binary data is written out to a medium and size appropriate to the original.

[depicted here:
two 'identical' representations of *Nude Descending Staircase, No. 2* by Marcel Duchamp
]

Binary Art



Nude_Descending_Staircase_No_2.jpg

182x110 pixels
8351 bytes

Marcel Duchamp
Nude_Descending_Staircase_No_2.jpg
Oil on Canvas
58" x 35"
8.16 Kilobytes
1912



Georgia O'Keeffe
Detail of *Grey_Line_with_Black_Blue_and_Yellow.jpg*
Oil on Canvas
48" x 30"
5.88 Kilobytes
1923

Custom software takes any computer file and displays the binary of which it consists.

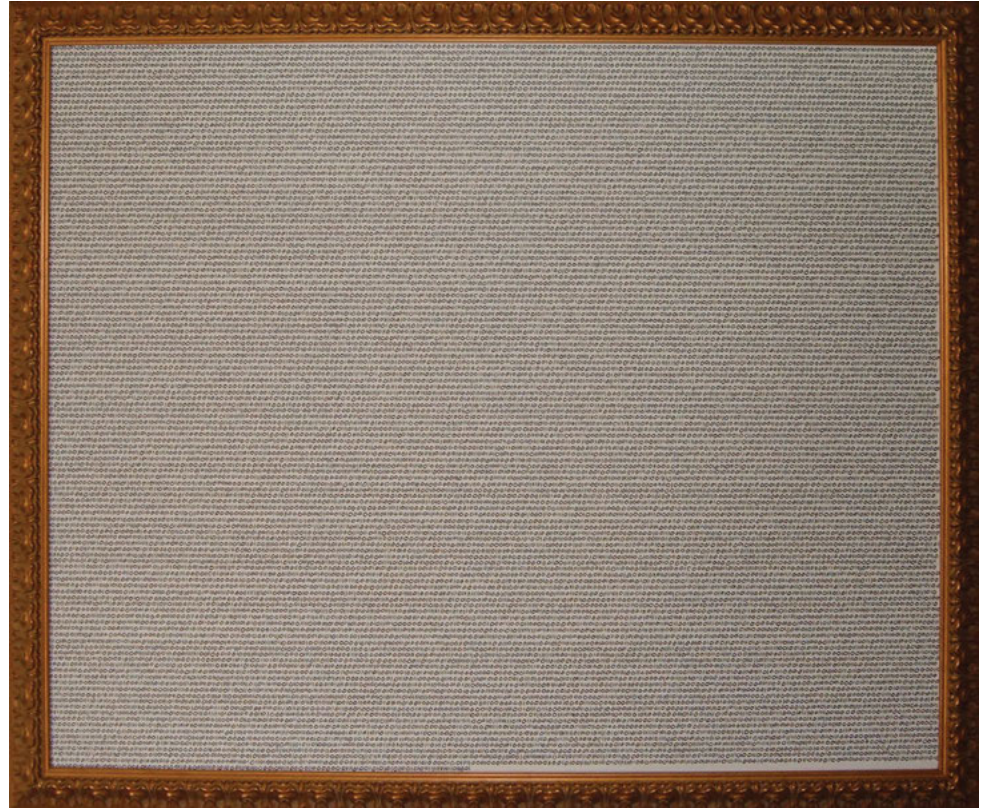
Instead of just displaying this information using a standard type face, it is written out in the artist's handwriting.

Each instance of binary art is unique.

[
depicted here:
a detail from
Grey_Line_with_Black_Blue_and_Yellow.jpg
shown actual size.
]

Binary paintings are reproductions of masterpieces from the course of history. Each *binary painting* is printed on stretched canvas at the size of the original. Although originally *binary paintings* were left unframed, they are now framed with a close approximation of the original's frame.

Only one instance of each painting is produced by the artist.



Albert Pinkham Ryder
The Race Track (Death on a Pale Horse).jpg
Oil on Canvas
27 ³/₄ x 35 ¹/₈"
3.9 Kilobytes
c. 1896



Leonardo da Vinci

The_Virgin_and_Child_with_St_Anne_and_the_Young_St._John_the_Baptist.jpg

Charcoal and touches of white on paper

55 ³/₄ x 41 ¹/₄

8.87 Kilobytes

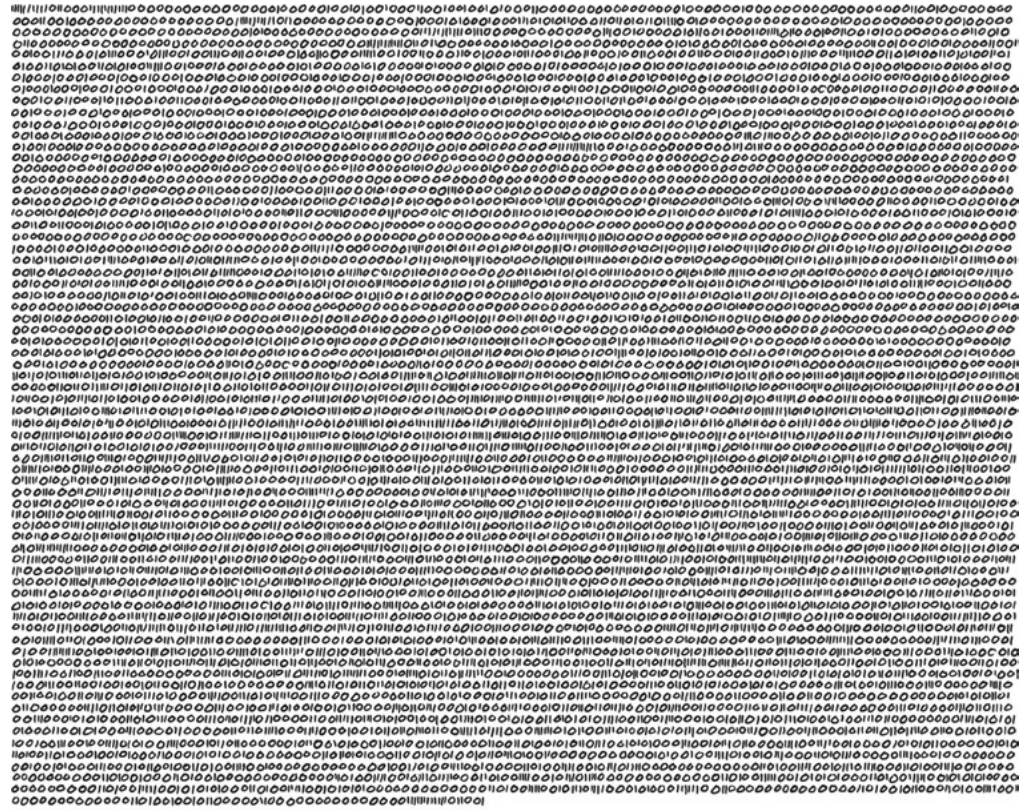
c. 1501

Binary drawings are reproductions of drawings created by famous artists. Each *binary drawing* is printed on paper similar to that of the original at the same size as the original.

Only one instance of each drawing is produced by the artist.

Binary photographs are reproductions of famous photographs. Each binary photograph is printed on photographic printer paper, whose glossiness closely resembles that of the original, at the size of the original.

As with actual photographs, multiple copies can exist of each binary photograph, but each print is created in the artist's handwriting from scratch. Thus each print contains the exact same data but is unique.



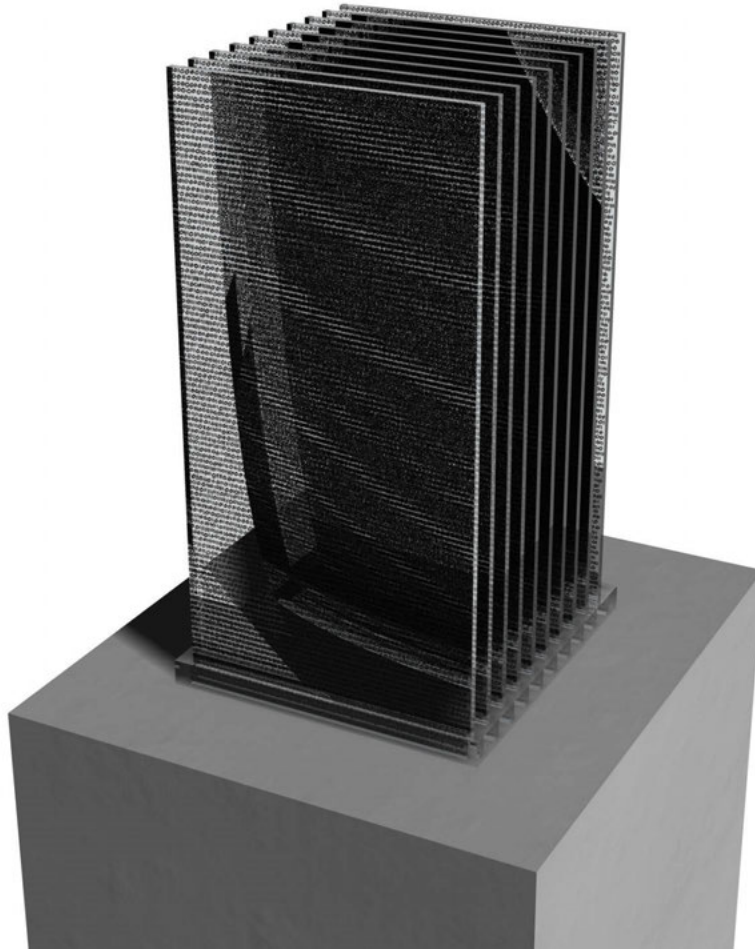
Ansel Adams
Moonrise_over_Hernandez_NM.jpg
16" x 20"
1.24 Kilobytes
October 31, 1941



Katsushika Hokusai
The_Great_Wave_off_Kanagawa.jpg
Color Woodcut
10" x 15"
953 bytes
1832

Binary prints are reproductions of famous print. Each *binary print* is printed at the size of the original on paper which resembles the original paper as closely as possible.

As with actual prints, multiple copies can exist of each *binary print*, but each print is created in the artist's handwriting from scratch. Thus each print contains the exact same data but is unique.



Sketch of
Man Ray
Indestructible Object
Metronome with cutout photograph
of eye on pendulum
8 ⁷/₁₆ x 4 ³/₁₆ x 4 ⁵/₁₆"
953 bytes
1964 (replica of 1923 original)

Although *binary sculptures* have yet to be produced, they will be three dimensional representations of the binary information contained in 3D model files. (i.e. dxf, iges, 3ds, etc.) *Binary sculptures* will consist of multiple plexiglas sheets covered with handwritten binary strings arranged in space to fill a space similar to that of an original sculpture. In the case of kinematic sculptures, the 3D files will contain animation information as well.

If the original sculpture is a unique object, then only binary version of it will every be produced. Otherwise unique multiples may be created.

Exhibition Proposal

Through the use of archival information, it is possible to recreate one of the galleries of the 1913 Armory show, but as a *binary installation*.

Existing records not only list which images and sculptures were part of the exhibition, but photographs reveal their placement in the space.

Each piece will be recreated as *binary art*. The room, lights, benches, pedestals, and frames will be recreated as accurately as possible.

Through *binary art* an audience can experience a historic exhibition first hand.

[
depicted here:
two 'identical' representations
of Gallery I from the 1913
Armory Show in New York City.
]

Binary Art



Above: Visualization of 1913 Armory Show, Gallery I as a *binary installation*.



Left: Archival Photograph of 1913 Armory Show, Gallery I



Charles Demuth
L_Saw_the_Figure_5_in_Gold.jpg
1928
oil on board
3' x 2'6"
4.4 Kilobytes



Purchase of *binary art* work includes

- 1) the work itself
- 2) a nameplate for the work.
- 3) a CD that contains the only existing digital version of the work with instructions on what printer, ink, and paper to use in reproducing the work.
- 4) a copyright agreement in which the owner is granted full rights to reproduce the work, but maintains the artist's right to reproduce smaller versions of the work for publicity or publication.

Purchasing Binary Art

Binary Art